



Agritech: Innovating Towards Sustainability

Central Otago

23 – 24 May 2024

Need for innovations to support sustainable agriculture.

Against the challenges facing agriculture today, we were excited to be able to show you some of the innovative farmers and growers that are pushing the boundaries in our backyard.

This was the opportunity to discover the cutting-edge technology and mindsets driving productive and profitable outcomes, all while championing sustainability. An opportunity to delve into the future of farming!

It was also a chance to learn from the different expertise around you, by engaging in meaningful conversations with fellow delegates across the two days. Judging from the curiosity and energy across the group, we all remained open-minded and receptive to different views and approaches, as well as collaborative solutions that will help innovate towards sustainability.

The knowledge and new ideas will be critical, as we work together toward a sustainable future for New Zealand and the world.



Andrew Cameron

Callaghan Innovation

Event Photos

You can access all the photos from the event [here](#).

Itinerary

Thursday 23rd May

7:30am - Agritech: Innovating Towards Sustainability Launchpad Breakfast

Location: Mountain Club Queenstown (85 Beach Street, Queenstown)

11:00 - Shining the Spotlight on Soil Microbes in Diversified Farming Systems

Location: Tinwald Farm

13:00 - Lunch at Forest Lodge Orchard

14:00 - The World's First 100% Electric, Zero Fossil Fuel Orchard

Location: Forest Lodge Orchard

16:00 - Launch Event: Agritech Activator

19:00 - Dinner at Stoaker Room, Wanaka

Friday 24th May

9:00 - Tackling the Climate Crisis Through Technology-assisted, Regenerative Farming

Location: Lake Hāwea Station

12:00 - Lunch at Tarras Community Hall

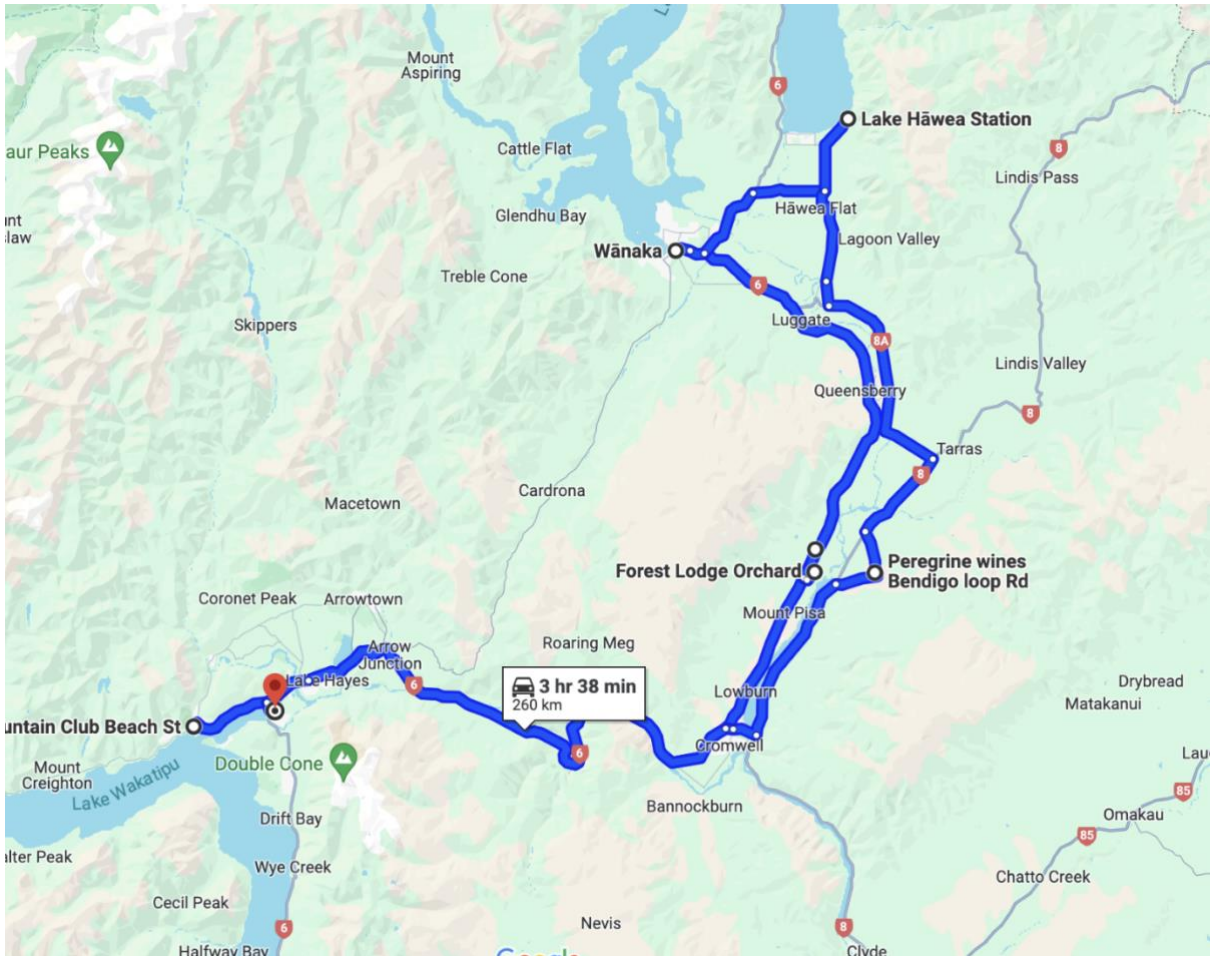
12:40 - Maintaining a Sustainable Viticulture Operation Across Generations

Location: Peregrine Estate - Bendigo

3:10 - Arrives at Queenstown Airport

END

Route Map



Site Visits

Mountain Club Queenstown

<https://www.mountainclub.co.nz/>
[Location](#)

Mountain Club Queenstown is home to a community of entrepreneurs creating positive impact in Central Otago. They are passionate about developing deeper connections and partnerships with industry leaders. We heard from some of the Mountain Club members making a real difference at our Launchpad breakfast event.

This was the perfect place to kick-off our two-day immersion, as well as a great opportunity to meet and learn more about your fellow delegates.

| | | |
|-----------|-----------------------|--|
| Host: | Katie Bowden-Tregoeat | kbt@mountainclub.co.nz |
| Speakers: | Alex Worker | alex@nutritionfromwater.com |
| | Seb Chapman | seb@fruitminder.com |



Tinwald Farm

<https://tinwaldfarm.co.nz/>

Location

[Tinwald Farm](#) is over 745 Ha diverse operation with Livestock, Vineyards, Nursery, Education, Clydesdales and much more. They remain focused on the biology of soils and how they interact within the ecosystem. They take great care to protect their biggest asset, the soil, through a science-led approach to improve soil ecology and performance with sustainability being a key focus.

Hosts: **Amanda Currie** amanda@tinwaldfarm.co.nz (best contact)
Jason Sutherland



"Just a quick message to say thank you for bringing the group to Tinwald Farm. Least it go unnoticed, we got a huge amount from the discussion. All the comments and questions have sparked lots of ideas for us. It was a privilege to have the assembled power of all that experience and knowledge in one room." Amanda

Forest Lodge Orchard

<https://www.forestlodge.nz/>

Location

Forest Lodge Orchard is a cornerstone in NZ's climate-conscious agriculture movement. In an industry known to produce high emissions, [Mike Casey](#) and his team are stepping up to the challenge and driving zero fossil fuel use in agriculture.

From extensive solar panel systems to electric tractors, Forest Lodge was a great example of how we don't need to sacrifice sustainability for profitability.

Hosts: **Euan White** ewan@forestlodge.nz (best contact)
Mike Casey



"We are happy to be part of future events of that nature, I will be the best contact for that. I am also the best contact for approaches from potential suppliers etc. Any and all ideas considered!" Euan

Lake Hāwea Station

<https://lakehaweastation.com/>

Location

Lake Hawea Station is New Zealand's premier regenerative High Country sheep and beef Station. The 6505 ha property currently runs a flock of purebred Merino sheep, with a focus on high value lamb and fine wool and purebred Angus cattle.

At the juncture of farming and the climate and biodiversity crisis [Lake Hāwea Station](#) is regeneratively farming for a sustainable future for farming. As New Zealand's first climate positive farm, technology plays a critical role in helping them achieve their awesome sustainability goals, including protecting waterways, introducing regenerative farming practices, and restoring biodiversity.

Hosts: **Richie Laming** richie@lakehaweastation.com (best contact)
Jack Mansfield

Follow Up

- Here's a great article about Pines [link](#)
- LHS Score Card [link](#)
- LHS Relationship with Shearer's [link](#)
- LHS Bec's Car of Wool [link](#)



"A pleasure 🙌. Go ahead and contact me directly whenever you wish." Richie

Peregrine Estate – Bendigo

<https://www.peregrinewines.co.nz/>

Location

Peregrine Estate is an organic, family-run vineyard that employs a holistic approach, integrating crop and livestock farming to vineyard management. Their goal is to create a closed system in which all inputs come off the land and are recycled back after the wine is made - with the only additional input being water.

Organic farming is fundamental to every aspect of Peregrine Vineyard Estates, with a holistic approach that integrates crop and livestock farming, to vineyard management.

Hosts: Lindsay McLachlan
Mike Winter
Fraser McLachlan (CEO) fraser@peregrinewines.co.nz (best contact)



Areas where technology could support Peregrine operations

- Bird protection alternatives to nets
- Mowing/undervine weed management (driverless machinery)
- Canopy disease management (UV powdery mildew management)
- Low/no carbon options for machinery
- Technology focussing on the assessment of plant moisture or nutrient.
- Technology that may allow for precision deployment nutrients.
- Technology that may allow for more precise estimation of crop loading/yield.
- Sustainable solutions in the winemaking process, for instance we have had an initial look at heat pump technology to replace our boiler.

Your Immersion Leader



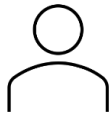
Andrew Cameron

Project Lead - Agritech, Callaghan Innovation

Wellington

andrew.cameron@callaghaninnovation.govt.nz

Supported By:



Clara Arribas

Agritech Activator Project Lead, Callaghan Innovation
Taranaki

clara.arribas@callaghaninnovation.govt.nz

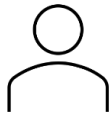
[Connect on LinkedIn](#)



Shane Dooley

Business Innovation Advisor, Callaghan Innovation
Auckland

shane.dooley@callaghaninnovation.govt.nz



Kerrie Mayo

Event Manager, Callaghan Innovation
Auckland

kerrie.mayo@callaghaninnovation.govt.nz

[Connect on LinkedIn](#)



Simon Yarrow

Group Manager Agritech, Callaghan Innovation
Auckland

simon.yarrow@callaghaninnovation.govt.nz

[Connect on LinkedIn](#)



Kevin O'Reilly

Project Manager, Callaghan Innovation
Taranaki

kevin.oreilly@callaghaninnovation.govt.nz

[Connect on LinkedIn](#)

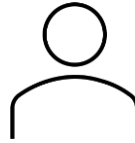
*Art by Adam Jory

Delegation



Adam Jory

GM Operations, Woodhaven Gardens
Manawatu - Whanganui
adam@woodhavengardens.co.nz



Andres Cruz

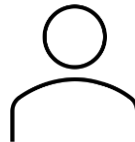
GM Agronomy and Production, Woodhaven Gardens
Manawatu - Whanganui
andres@woidhavengardens.co.nz



Alex Pressman

CEO, Waikaitu Ltd.
Nelson

alex@waikaitu.com
[Connect on LinkedIn](#)



Andrew Craig

Sales Consultant, Bird Control NZ
Nelson

andrew.whataroa@gmail.com



Alexis Robin

Lower South Island Sales Manager, Tabula
Otago

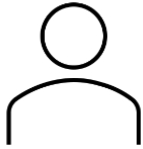
alexis.robin@tabula.live



Antony Lee Heywood

CE, Vegetables New Zealand
Wellington

antony.heywood@freshvegetables.co.nz



Ben Kek

Agronomist, Winter Berries
Auckland

jde5501@hotmail.com



Jonathan Good

CEO, Scentian Bio
Auckland

jonathan@scentianbio.com
[Connect on LinkedIn](#)



Brendan Hamilton

Founder and CEO, H2Ortigator
Hawke's Bay

info@h2ortigator.co.nz
[Connect on LinkedIn](#)



Kim Hore

Managing Director, Cen Eng Ltd
Otago

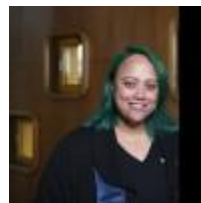
cenengkim@gmail.com
[Connect on LinkedIn](#)



Cam Lewis

Managing Director, The Tender Tips Company LTD
Manawatu - Whanganui

cam@lewisfarms.co.nz



Kylie Horomia

Growth & Transformation Manager, AgriTech New Zealand, Auckland

kylie.horomia@agritechnz.org.nz



Joanna Costello

Business Development Manager, Lincoln Agritech
Canterbury

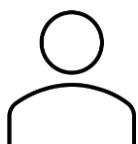
joanna.costello@lincolnagritech.co.nz
[Connect on LinkedIn](#)



Michael Kramer

Grower Trial Lead, Zespri
Bay of Plenty

michael.kramer@zespri.com
[Connect on LinkedIn](#)



Michael Krause

Director, ORNI-X Limited (Bird Control NZ)
Canterbury

michael.krause@birdcontrol.co.nz
[Connect on LinkedIn](#)



Richard Beaumont

Founder, AGOVOR
Auckland

richard.beaumont@agovor.com
[Connect on LinkedIn](#)



Mireia Marques

R&D Specialist, Callaghan Innovation
Wellington

mireia.marques@callaghaninnovation.govt.nz
[Connect on LinkedIn](#)



Sarah Adams

*GM Global Strategy @ New Ventures, Gallagher
Animal Management*
Waikato

sarah.adams@gallagher.com



Nicolás Erdödy

Director, Open Parallel Ltd
Otago

nicolas@erdody.co.nz



Stephen Brown

Solution Consulting Director, Veeva
Auckland

stephen.brown@veeva.com
[Connect on LinkedIn](#)



Rachel Kilmister

R&D Manager, NZAPI
Hawke's Bay

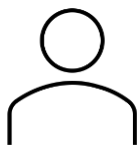
rachel@applesandpears.nz



Stephen Ward

Head of Engineering, Bluelab
Canterbury

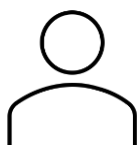
steve.ward@bluelab.com
[Connect on LinkedIn](#)



Steve Hore

Chartered Mechanical Engineer, Cen Eng Ltd
Otago

cenengsteve@gmail.com



Stuart Kilmister

Technical Manager/Owner, Kilhaven Orchards
Hawke's Bay

rachel@applesandpears.nz



Tanya Simmonds

Founder, HempCentral Limited
Otago

tanya@hempcentral.earth